

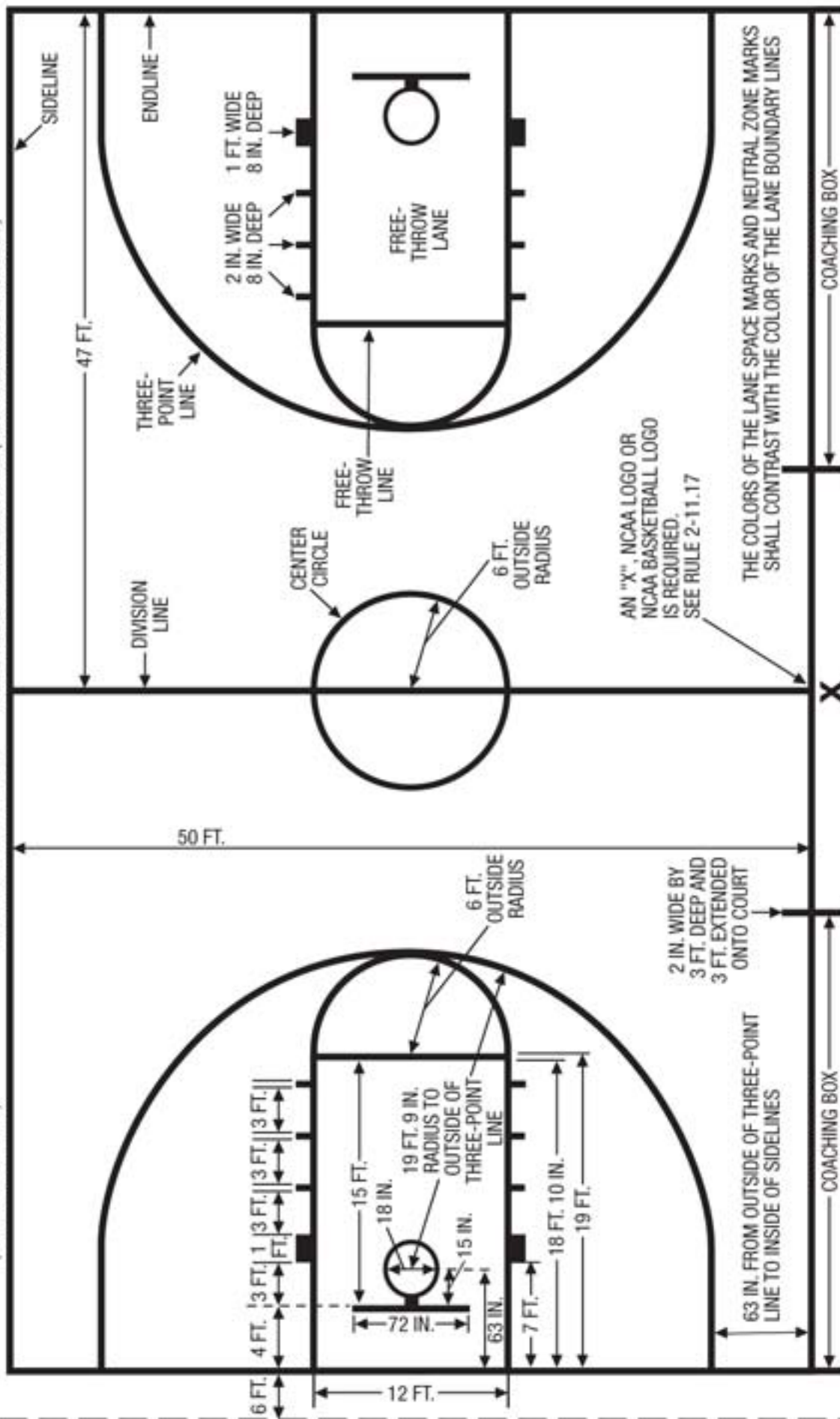
THE COURT

3 FT. MINIMUM UNOBSTRUCTED SPACE OUTSIDE (PREFERABLY 10 FT.)

OPTIMUM WIDTH 50 FT. INSIDE SIDELINES

OPTIMUM LENGTH 94 FT. INSIDE ENDLINES ALL LINES SHALL BE 2 IN. WIDE (NEUTRAL ZONES EXCLUDED)

RESTRAINING LINE (12 IN. SEGMENTS)



AN "X", NCAA LOGO OR NCAA BASKETBALL LOGO IS REQUIRED. SEE RULE 2-11.17

THE COLORS OF THE LANE SPACE MARKS AND NEUTRAL ZONE MARKS SHALL CONTRAST WITH THE COLOR OF THE LANE BOUNDARY LINES

COURTSIDE (APPROXIMATELY 3 TO 12 FEET FROM THE BOUNDARY LINES)